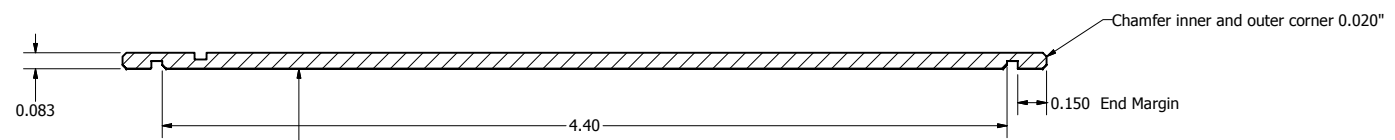


All 38mm cases are identical, except for the length.

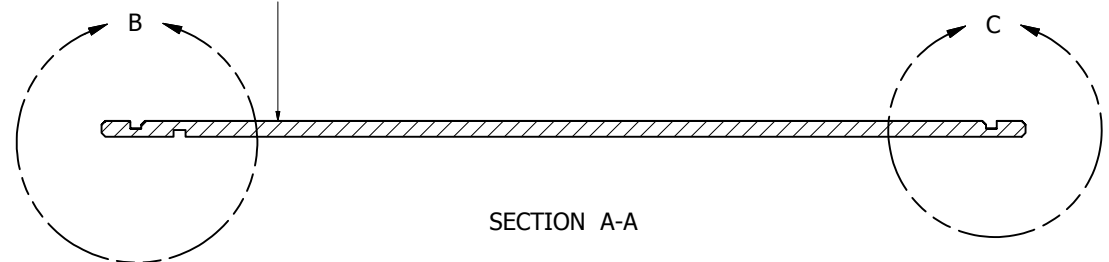
- Lengths:
 38-120 4.81"
 28-240 7.00"
 38-480 11.5"
 38-740 16.0"
 38-1200 24.625"

Material is 6061-T6 drawn tubing

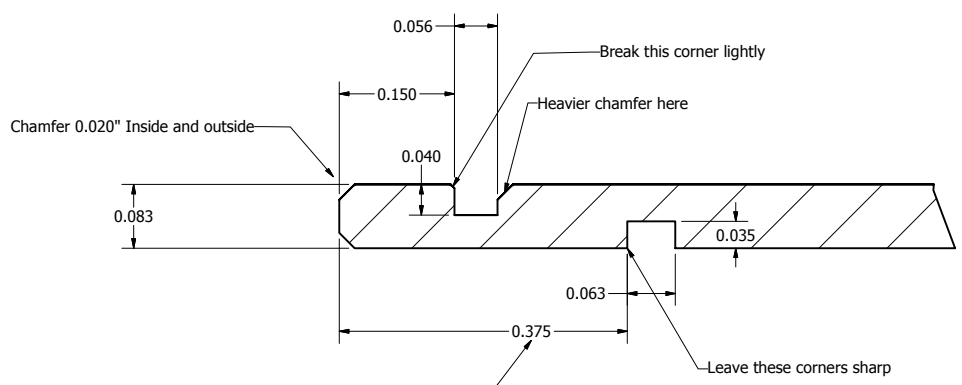
Notes on DOM tube:
 The design can tolerate up to 0.004" variation in wall thickness. We've been getting a lot of crappy Chinese tube that is much worse than this. Check your tube stock before machining cases. We can provide some fit gauges to help with this.



Note: It is the groove to groove length dimension that matters. The outside case length can vary slightly, as long as 0.1" minimum end margins are maintained.

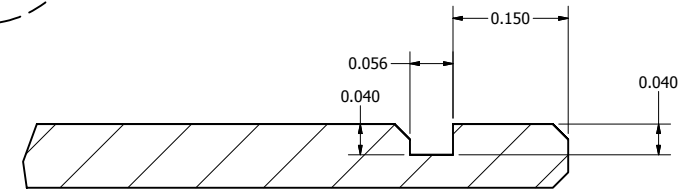


SECTION A-A



Thrust ring position can be varied from 0.25" to 0.75". Placement here works well for Aeropack and Slimline retainers.

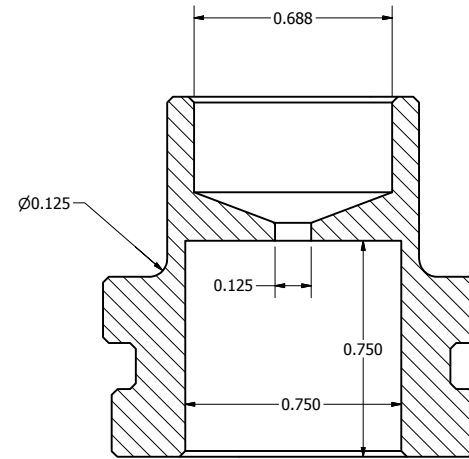
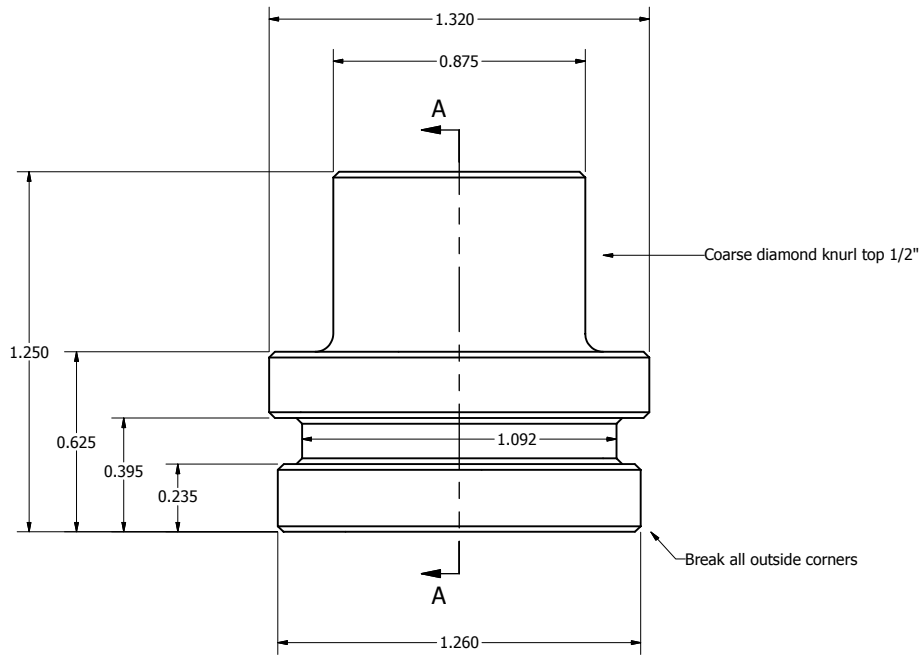
DETAIL B



Internal groove dimensions and end margin are the same at either end of the case.

DETAIL C

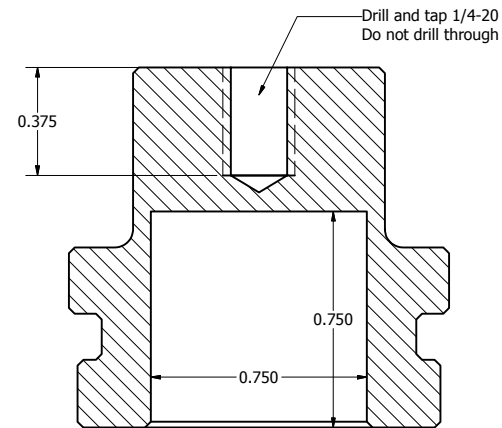
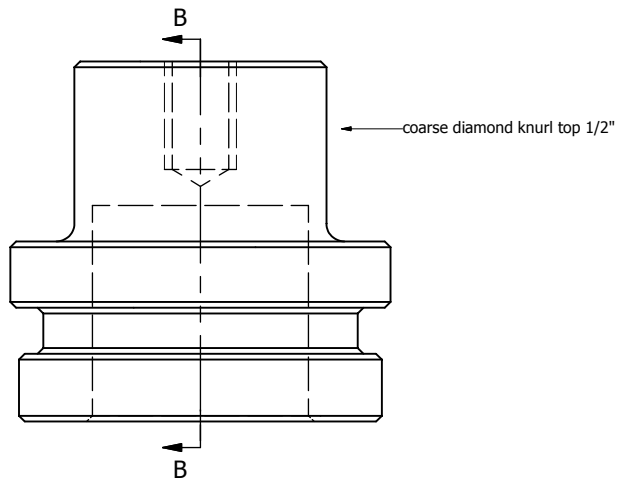
DRAWN Jeff	2/21/2005	LOKI RESEARCH, LLC	
CHECKED		TITLE	
QA		38mm Cases	
MFG		SIZE	DWG NO
APPROVED		C	38mm_H144
		SCALE	REV



SECTION A-A

Delay style bulkhead

Outside dimensions same as delay style (above).



SECTION B-B

Plugged style bulkhead

Material is 6061 aluminum

DRAWN Jeff	2/21/2005	LOKI RESEARCH, LLC	
CHECKED		TITLE	
QA		38mm Bulkheads	
MFG		SIZE C	DWG NO 38mm_H144
APPROVED		SCALE	REV
			SHEET 10 OF 10